

Title: Replacing Door Hinges for recall of HRF266N6CSE Units	
Creation Date: May 24, 2022	Service Pointer Number: HRF-01-09-2021R
Revision Date:	Models: HRF266N6CSE
Symptom: All Original Hinges Are Recalled and Must be Replaced	

Issue:

The refrigerator door hinges can break causing door detachment, posing an impact hazard to the consumer.

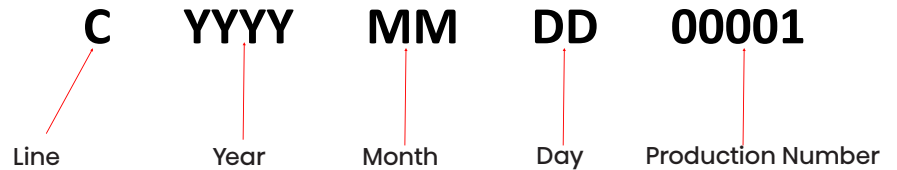
If you have one of the models in the table below that fall in the serial date range below please be sure to change the door hinge set.

NOTE: Please attach a picture of the MODEL/SERIAL tag & a picture of the service ticket with BOTH the customer and technician signatures.

Serial Number Range:

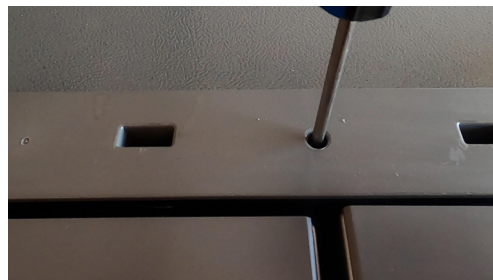
See chart below for model information and serial date range. Also listed below is an example serial code and how to decipher a Hisense refrigerator serial date code.

MODEL NUMBER	SERIAL NUMBER RANGE	PART NUMBERS
HRF266N6CSE	C2020050100001 to C2020123109000	K2104353 & K2104357

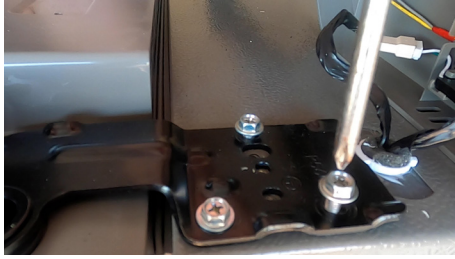


Repair:

1. Power off the unit.
2. Remove 3 Phillips (+) screws across the holding the table top hinge cover.
3. Move hinge cover to side.

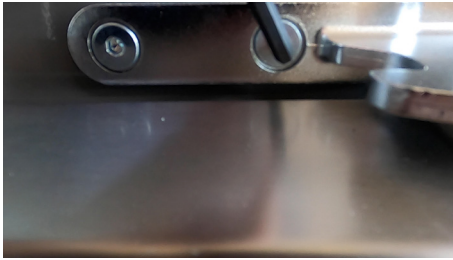


4. Remove 3 Phillips (+) screws holding the top hinge mount. Be sure to hold door to keep it from falling. Remove top hinge.

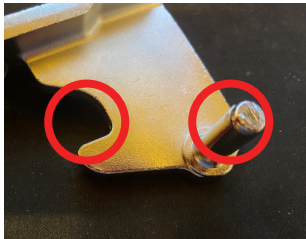


5. Lift door off bottom hinge and place in a safe place.

6. Remove 2 ALLEN screws and 1 Phillips (+) screw holding bottom door hinge on cabinet.



7. Attach new hinge and remount door by completing steps in reverse order. Being sure to properly lubricate the new hinge.



8. Repeat steps for the other door.

This information is published for experienced repair technicians only and is not intended for use by the public. Information provided in this pointer is subject to change or update without notice.